

Century Plaza

FOR LEASE



500 South Florida Avenue, Lakeland, Florida 33801
Property Highlights



- 80,000 SF Class “A” office building
- Corner of South Florida Avenue & Walnut Street
- Attached parking garage
- Outstanding views of Lake Morton & downtown Lakeland
- Gym Access

Jack Strollo, CCIM, CPM Vice President, Broker 863-683-3425 jstrollo@resbroadway.com
100 S. Kentucky Avenue Suite 290, Lakeland, FL 33801



500 S. Florida Ave, Lakeland, Florida

Property: 80,000 SF Class “A” office building on corner of South Florida Avenue & Walnut Street with attached parking garage. Outstanding views of Lake Morton and downtown Lakeland. Offices are elegantly appointed and lobbies feature marble and tile finishes. Garden like setting with mature landscaping, and a masterpiece one-of-a-kind fountain as the grounds focal point. This is an ideal location for professional offices and offers easy access to all the amenities, services, and dining downtown Lakeland has to offer. Currently available 1,815 sf to 2,314 SF.

Location: Easy access off of Florida Ave. and on Lake Morton, one of downtown’s most beautiful lakes. Just over 3 miles to I-4 or the Polk Parkway. Ideally situated directly between Tampa and Orlando.

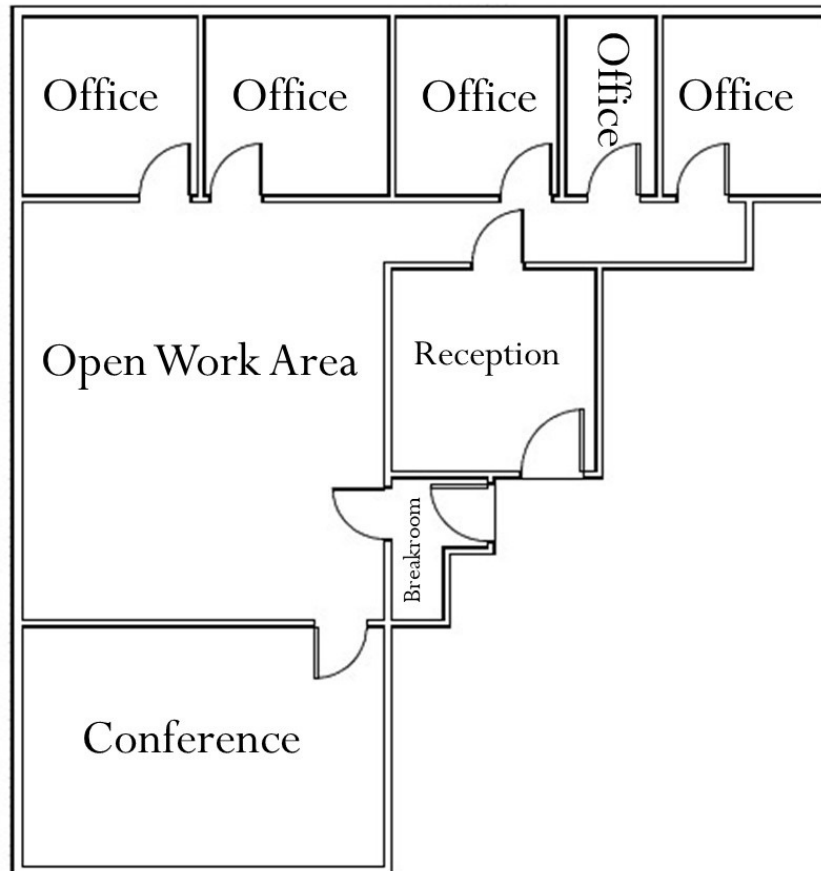
Lease Rate: 2nd Floor - Suite 211 - 2,314 SF Negotiable
3rd Floor - Suite 350 - 1,815 SF Negotiable



Jack Strollo, CCIM, CPM Vice President, Broker 863-683-3425 jstrollo@resbroadway.com
100 S. Kentucky Avenue Suite 290, Lakeland, FL 33801

Floor Plan 2nd Floor
500 South Florida Avenue, Lakeland, Florida 33801

Floorplan



Suite 211 2,314 sf Available



Every effort has been made to provide accurate information. The floor plan contained here is not to scale and does not reflect exact dimensions and is reference for illustrative purposes only.

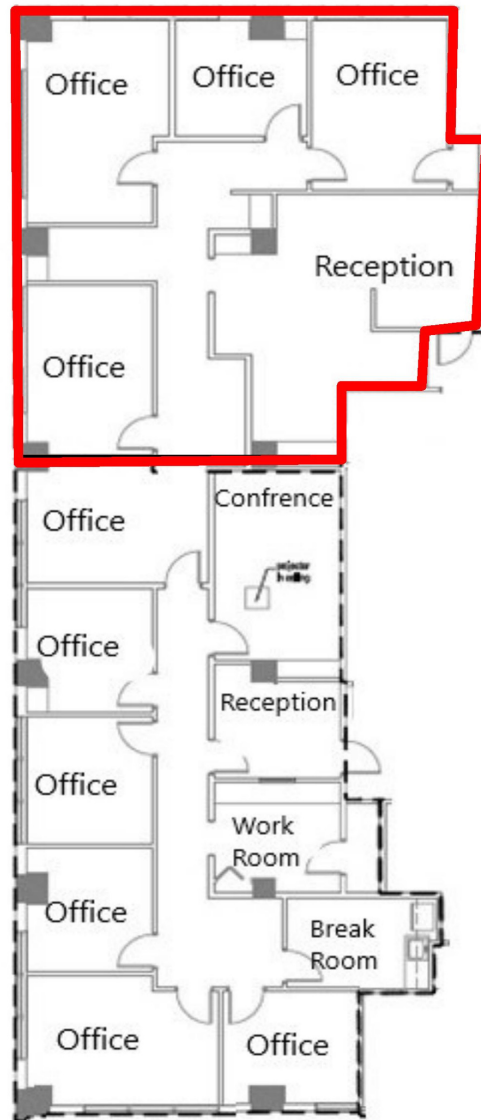
Property Photos
500 South Florida Avenue, Lakeland, Florida 33801



Jack Strollo, CCIM, CPM Vice President, Broker 863-683-3425 jstrollo@resbroadway.com
100 S. Kentucky Avenue, Lakeland, FL 33801

Floor Plan 3rd Floor
500 South Florida Avenue, Lakeland, Florida 33801

Floorplan



Suite 350

Suite 350 1,815 SF



Property Photos
500 South Florida Avenue, Lakeland, Florida 33801



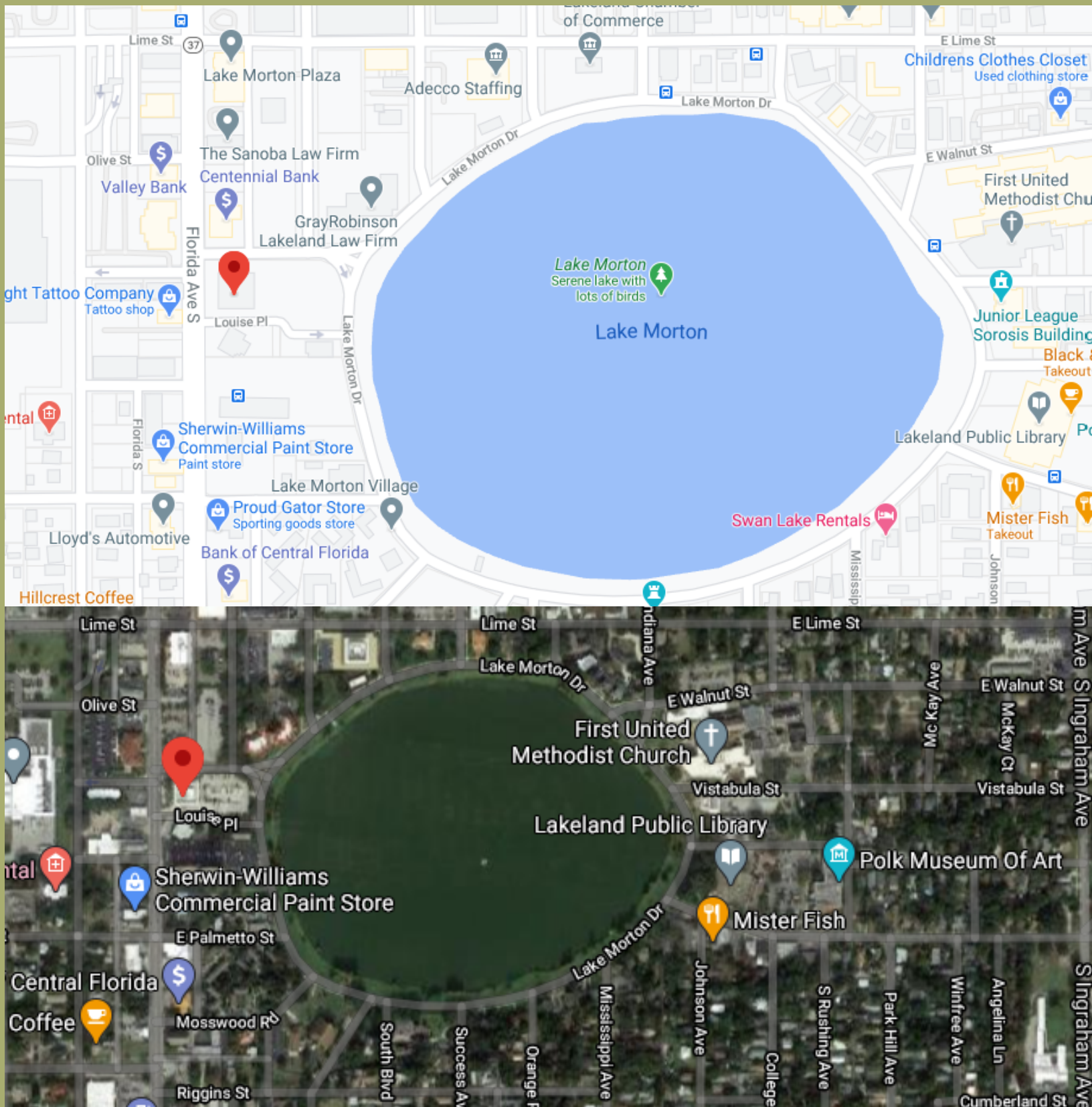
Jack Strollo, CCIM, CPM Vice President, Broker 863-683-3425 jstrollo@resbroadway.com
100 S. Kentucky Avenue, Lakeland, FL 33801

Property Photos
500 South Florida Avenue, Lakeland, Florida 33801



Jack Strollo, CCIM, CPM Vice President, Broker 863-683-3425 jstrollo@resbroadway.com
100 S. Kentucky Avenue, Lakeland, FL 33801

LOCATION MAP
Century Plaza
500 South Florida Avenue, Lakeland FL 33801



Jack Strollo, CCIM, CPM Vice President, Broker 863-683-3425 jstrollo@resbroadway.com
100 S. Kentucky Avenue Suite 290, Lakeland, FL 33801



Community

Located on the I-4 Corridor of Central Florida between Tampa and Orlando, Lakeland is quickly transforming into a global economic hub. In proximity are two international airports, two interstate highways, passenger, and freight rails, and a deep water port.

With access to skilled employees from our world-class education facilities such as Florida Southern College, Southeastern University, and Florida Polytechnic, Lakeland has become the headquarters or regional hub for major corporations like Publix Supermarkets, SaddleCreek, GEICO, Lockheed Martin, and FedEx.

Join these strategic companies as a shareholder in Lakeland's highly favorable business and real estate market. With multiple economic development councils, entrepreneurship incubators, and competitive tax rates, there is no better time to make an investment in Lakeland.

LAKELAND RANKINGS

- #1 Cities to buy a home (Business Insider)
- #1 Fastest growing city (Bloomberg)
- #1 most philanthropic city (Philanthropy)
- #6 safest places to live
- #6 mid-sized metro job growth (Business facilities)
- #17 best cities for new graduates (Good Call)
- #7 Best Places to move (US News & World Report)

LAKELAND BENEFITS

- North & South Highways: I-75, I-95, Hwy 27
- East & West Highways: I-4, Hwy 60, Hwy 92
- 32 Miles from Tampa, 54 Miles from Orlando
- CSX Rail Access
- 2 Major Airports less than 1 hour away
- Over 10 Million People within 100 Miles
- Largest Municipality in Polk County
- City of Lakeland population: 107,552
- Average annual wages: \$56,376
- Unemployment rate: 3.4%
- Florida's 4th Best City in business tax climate index